



DRONITECHTM

Worldwide leader in Engineering Surveys and Inspection Solutions



AERIAL SURVEY / MONITORING



ORTHOMOSAIC CONSTRUCTION SITE MAPPING



INDUSTRY PLANT / FACTORY INSPECTION



DGPS & TOTAL STATION SURVEYS

GLOBAL INDUSTRY SURVEY AND INSPECTION SOLUTIONS

**INFRASTRUCTURE
SECURITY**

TRANSPORT

SURVEILLANCE

TELECOMMUNICATION

AGRICULTURE

ENTERTAINMENT & MEDIA

INSURANCE



Infrastructure, Agriculture, Media & security . . . We serve them all

"Drones are going into business.

Having already made the leap from military to consumer use, they're now headed for industries from construction to cinematography to law enforcement. Noah Poponak, aerospace and defense senior equity research analyst in Goldman Sachs Research, lays out how he sees drones evolving into a \$100 billion market by 2020."

- Noah Poponak, Global Investment Research



We provide your business with the important data it needs to optimise operations, take less risk and do smart productive work. We provide a software suite of applications as per your industry thereby taking you leaps ahead in getting the critical information required to make smarter business decisions. Our bouquet of services is spread across all Industries.

Drone Infrastructure Services

- 3D Mapping Structures
- Monitoring Solutions
- Property Showcase



Drone Industrial Inspections

- Tower Inspections
- Infrastructure Inspections
- Power Line Inspections



Land Survey Solutions

- DGPS Survey
- Total Station Survey
- Land Records



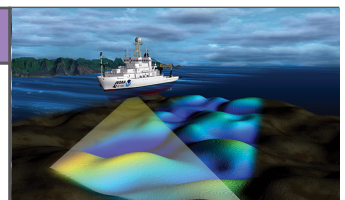
Drone Mapping Services

- Land Mapping
- Photogrammetry
- Orthophoto



Bathymetric Surveys

- Depth measurement
- Check silt formation
- Volume calculations



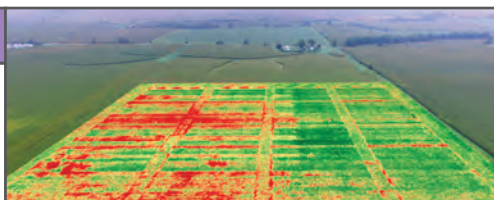
Drone Mining Inspection

- Volume calculation
- Surveying
- Security and Monitoring



Drone Agriculture Services

- Monitoring using NSVI/RE Cameras
- Agriculture Consulting
- Pesticide Spraying



Construction Planning, Consulting, Civil Engineering Surveys....

**Our experienced survey teams
have worked on multiple infra
projects**

Engineering surveys are done to measure physical features of the land with great precision. The survey engineers then establish the dimensions, distances and features of the land area.

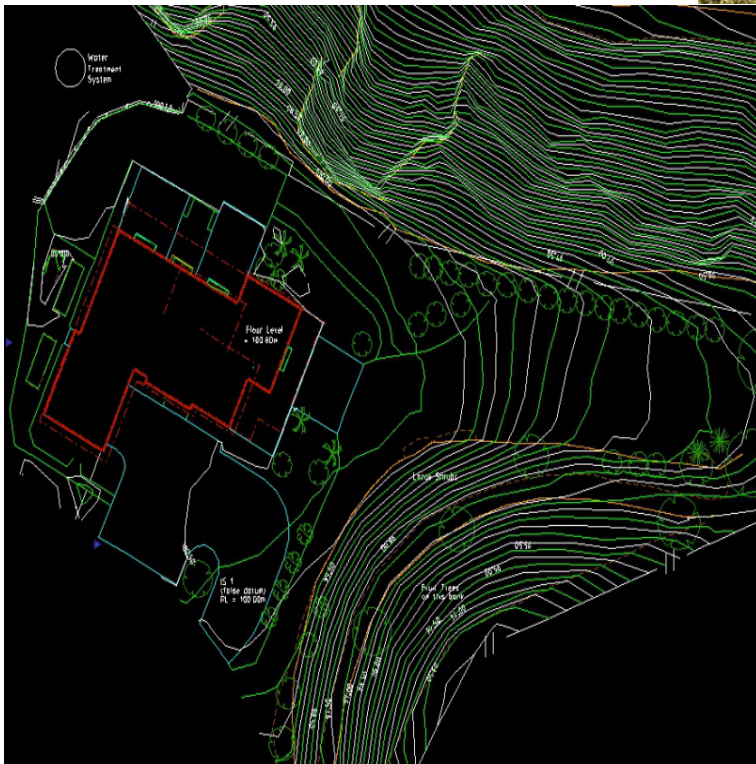
We use state of art technology such as GPS, AutoCAD software etc to add quality to all our land development and construction projects.

DGPS Survey

We provide state of the art DGPS solutions for our clients. DGPS stands for differential global positioning system and provides X,Y,Z accuracy within centimeters.

Common use cases:

- Generating accurate contours and topography data
- Improves accuracy of drone data
- Useful in uneven terrain



Total Station Survey

Our contour survey services are cost effective and can be customized to suffice the client specifications.

Primary objective of conducting these surveys is to identify any noticeable difference in elevation of the existing land.

Common use cases:

- L-Section Survey
- Contour Survey
- Traverse Survey
- Cross Section Survey

Our Strength

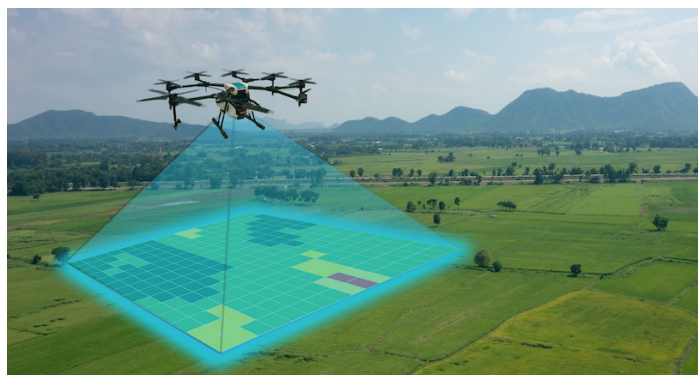
DROVATION SOFTWARE SOLUTIONS PVT. LTD.

is a commercial engineering land survey and inspection solutions and services provider in the India and Canada.

Through the provision of nation-wide rapid response mapping and 3D modelling solutions for Industrial Services, DroniTech puts easy-to-use data solutions in the hands of operations managers for quick and deliberate decision-making.



DRONITECH™



Our Clients



DROVATION Software Solutions Pvt. Ltd.

Corporate Office :

PLOT NO. 387/403 Dharamshinka Villa RSC 26, Gorai 2, Borivali West, Mumbai, Maharashtra 400092

DROVATION Software Solutions

Canada Office :

215 Edward Street Victoria BC V9A3E4, Canada

Call: +1 403 803 2150

Email : sales@dronitech.ca

For all Business enquiries write to :

sales@dronitech.com

Call : +91 9820096850/9820125195



DRONITECH and DRONITECH SAHAS are registered brands of DSSPL.

www.dronitech.com